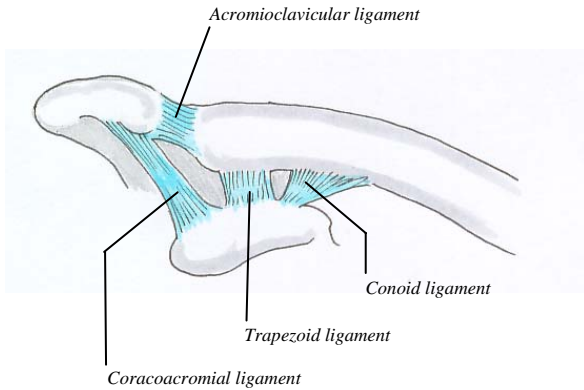


Acromioclavicular joint



Type of joint

Plane type synovial joint

Articulating surfaces

Acromial end of the clavicle, and the acromion process of the scapula

Articular capsule

Attached to the margins of the articular surfaces
Lined with synovial membrane
Contains synovial fluid
Strengthened superiorly by fibers from the trapezius

Ligaments

Acromioclavicular ligament
Conoid ligament
Trapezoid ligament

Stability factors

Stability is maintained by extrinsic ligaments, far from the joint itself
Conoid and trapezoid ligaments anchor the clavicle to the coracoid process, suspending the free limb and scapula from the clavicle

Movements

The acromion rotates on the clavicle

Blood supply

Suprascapular and thoracoacromial arteries

Nerve supply

Lateral pectoral and axillary nerve
Subcutaneous lateral supraclavicular nerve