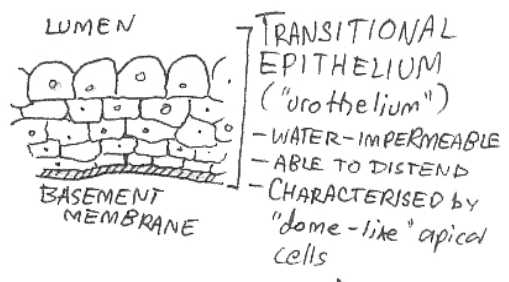
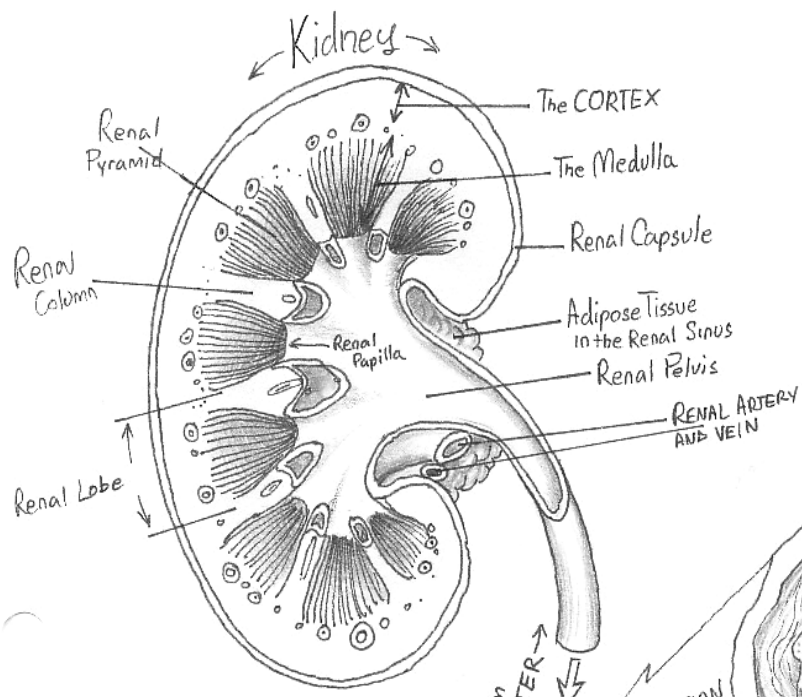


THE URINARY SYSTEM

31.3.03

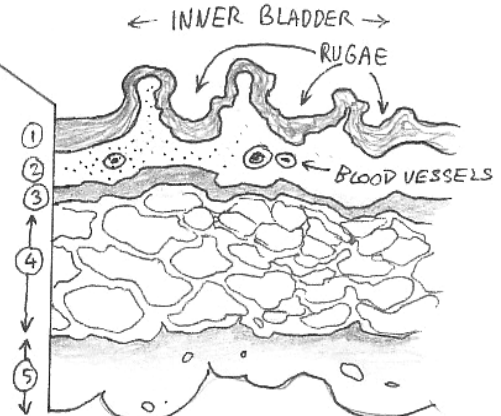
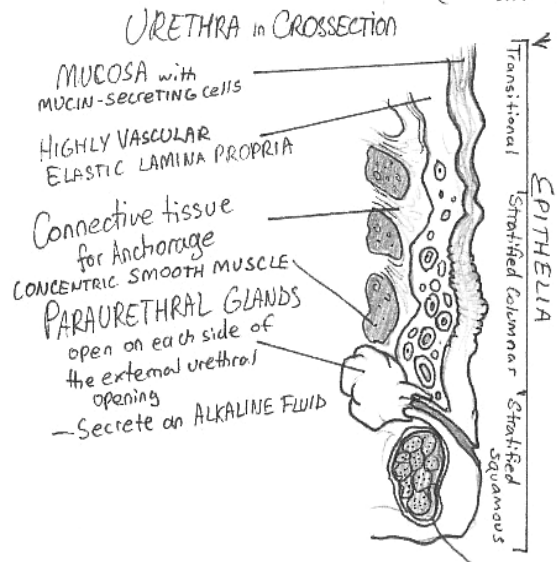
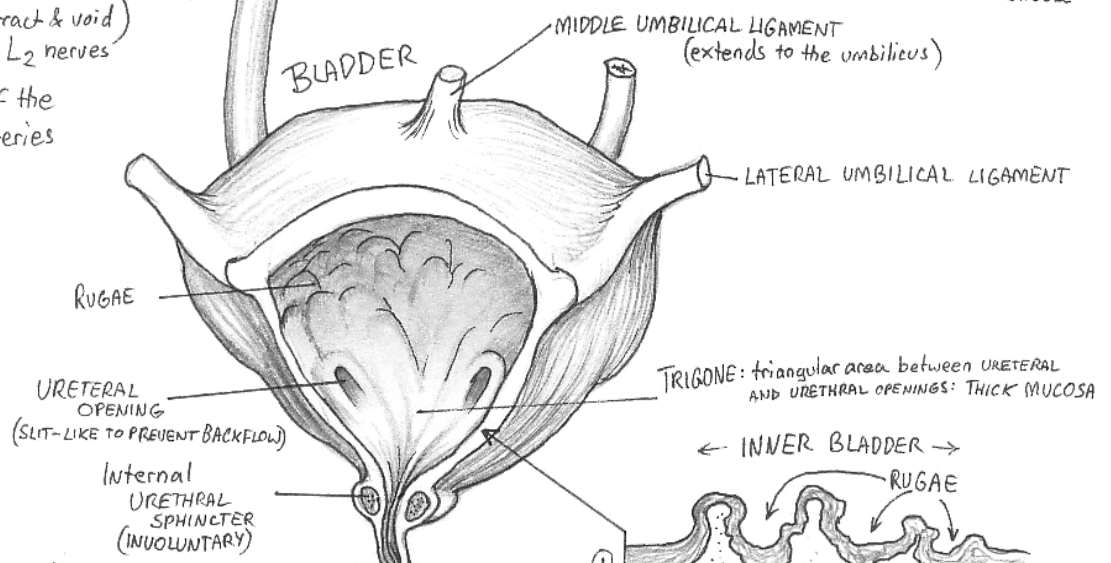
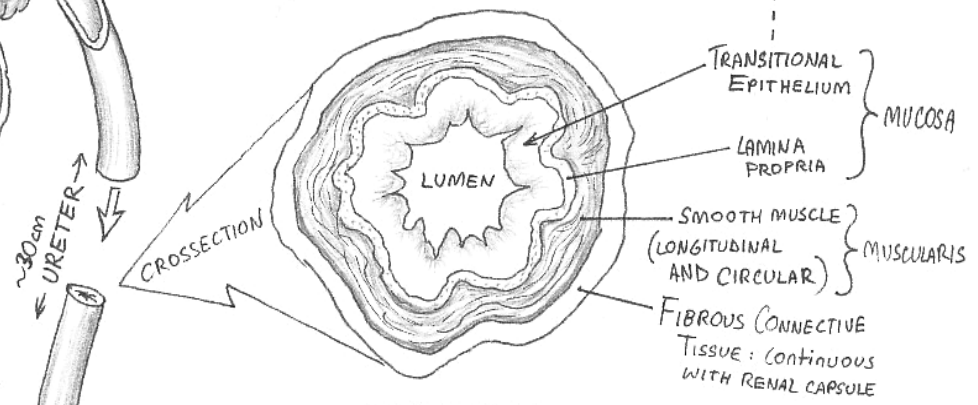


Innervation of the Bladder:

PARASYMPATHETIC: from Pelvic Splanchnic Nerves
(motor to Detrusor Muscle: when stimulated, cause bladder to contract & void)

SYMPATHETIC: from T₁₁ - L₂ nerves

* Supplied by branches of the Internal Iliac Arteries



- ① TRANSITIONAL EPITHELIUM
- ② LAMINA PROPRIA
- ③ SUBMUCOSA
- ④ DETRUSOR MUSCLE
- ⑤ VISCERAL PERITONEUM

External URETHRAL SPHINCTER (VOLUNTARY)